



# Developing an Intranet Resource to Compile and Disseminate Animal Welfare Information for Library Liaisons

Frank Davis, AHIP, Research and Education Librarian • Rick Brewer, Assistant Director, Medical Center Library  
Valerie Perry, Head, Agricultural Information Center

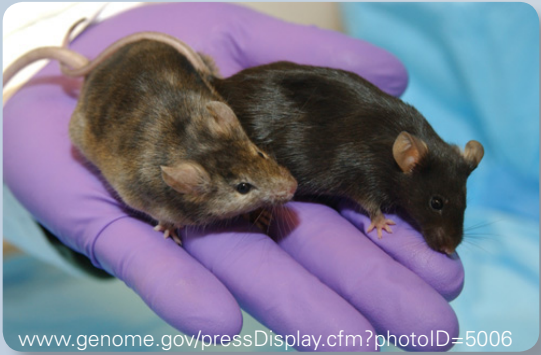
University of Kentucky, Lexington, KY

## Objective

The project's goal is to create and maintain a comprehensive database containing subject-specific information. The information is used to serve as a key resource for grant support and enhance the ethical treatment of animals.

A library Intranet allows librarian liaisons to conduct database searches and prepare customized reports for campus researchers. EndNote software is utilized, due to a campus site license.

### Research Mice in Genome Study Lab



## Advantages for Grant Applicants

- Timesaver for researchers
- Comply with federal laws and grant requirements
- Full confidentiality
- Librarian searching expertise
- Flexible delivery options
- Value-added EndNote options, with tech support
- EndNote citations easily inserted into grant narrative

## Implementation Process

A librarian member of the campus Institutional Animal Care and Use Committee (IACUC) gave a presentation explaining the project's goals and the advantages for researchers. Participating liaison librarians also promoted the project via email and meetings.

Interested researchers met with librarians to discuss research needs, search strategies, and preferred delivery options. Results are sent and searches revised as needed. EndNote attachments can be directly imported into users' libraries.

A SharePoint folder is housed on the library Intranet to hold the EndNote master library and supporting documents.

## Examples of Databases Used

- PubMed (Medline)
- Web of Science
- BIOSIS (Biological Abstracts)
- SciFinder Scholar (Chemical Abstracts)
- PsycINFO
- Agricola
- CAB Abstracts
- Additional databases based on topic & researcher needs

## Stored Search Strategies

Filters have been created for several database platforms. Login instructions are given to interested campus researchers.

### PubMed (via My NCBI)

MeSH terms and key words

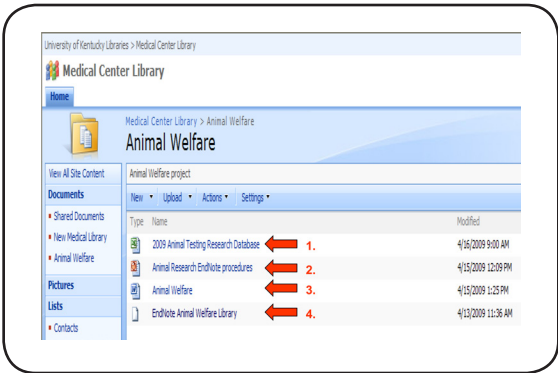
### Web of Science

Key word search strategy

### OvidSP (campus access to several relevant databases)

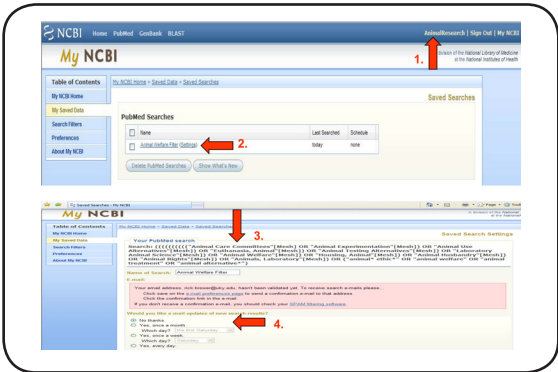
Key word search strategy that can be run across relevant DBs.

### SharePoint Intranet Content



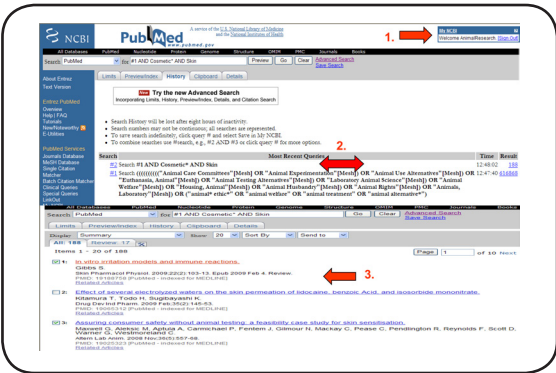
1. Excel Database  
Data elements include: unique identifiers, descriptions of researcher needs, dates run, library liaison assignment. Content restricted to participating liaisons.
2. Animal Welfare EndNote Procedures  
Instructions for database imports, export to xml, record customization.
3. Animal Welfare  
Project overview, database logins, sample searches, useful URLs.
4. EndNote Animal Welfare Library  
Library "checked out" for update, results sent to researchers in xml format.

### My NCBI Account and Saved Search



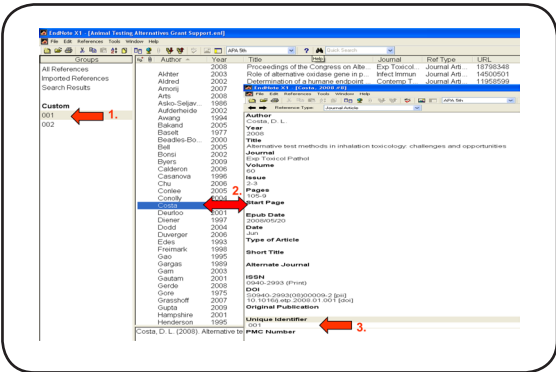
1. Account Name  
Access instructions given to interested University of Kentucky animal researchers.
2. Saved Search
3. Search Strategy  
Researchers can call up strategy and then cross it (Boolean AND) with specific research needs.
4. Update options  
No regular SDI updates chosen

### My NCBI Search Strategy & Citations



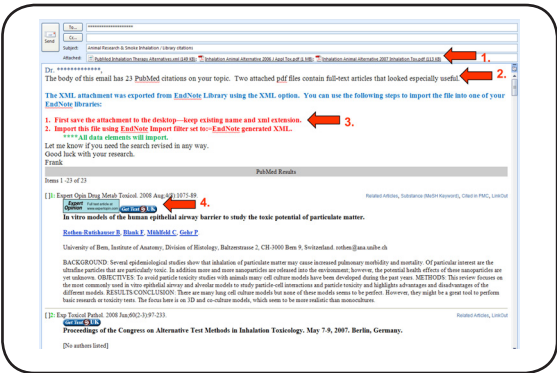
1. My NCBI Account
2. Search Results  
Search statement #1 is saved strategy. Statement #2 crosses hedge with individual research need.
3. Sample Citations  
Summary Format. Emailed results are sent in Abstract format.

### EndNote Library Set-up & Customization



1. Custom Group  
Unique Identifier numbers linked to subject information contained in Intranet Excel database
2. Sample Citation
3. Unique Identifier  
Added to EndNote library via Change and Move Fields command. Serves as back-up for Custom Groups

### Example of Update Sent to Client



1. Attachments  
EndNote XML file with citations, plus selected full-text PDFs.
2. Summary
3. Import Instructions for EndNote
4. Content Excerpt  
Contains SFX icon with access options.

## Conclusions

### Project Strengths

- The project increased researcher awareness of librarian expertise and support services.
- Creation of accessible saved search hedges benefits researchers who prefer self-sufficiency.
- Increased awareness of EndNote capability to help grant writers.

### Project Weaknesses

- Librarians need an increased understanding of the institutional research culture, in order to find the most effective approaches for promoting services to researchers.
- SharePoint Intranet is cumbersome for updating the EndNote library.

## Next Steps

- Increase IACUC promotion of service to researchers via Primary Investigators (PI) discussion list.
- Give brief presentations to relevant campus departments and groups.
- Recruit and train relevant campus librarians to increase awareness and encourage referrals.
- Monitor search filters and yield. Change as needed to obtain best results.

